

Application:

For fluid level indication, visual inspection of vessels, boilers and silos

Operating conditions:

Operating pressure: 16 bar
Operating temperature: 243°C

Special design options:

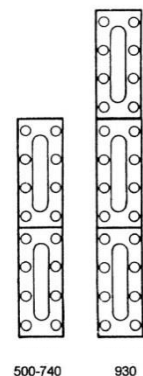
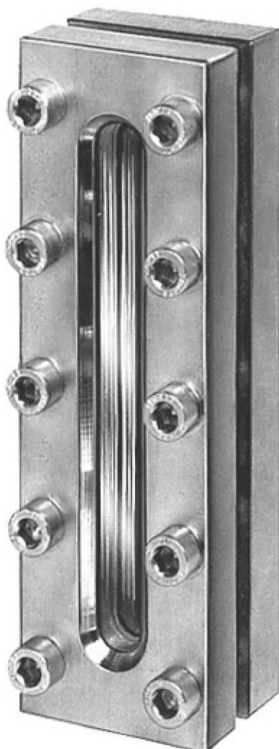
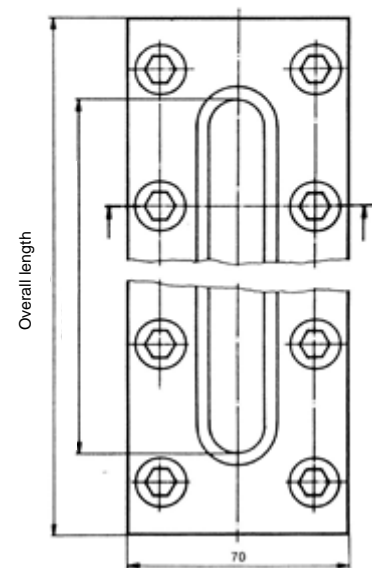
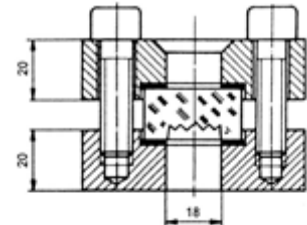
Available upon request.

Materials:

Base flange	WN 1.4571	1.0579 (S355J2)	WN 1.4571
Cover flange	WN 1.4571	1.0579 (S355J2)	1.0579 (S355J2)
Bolts DIN912	A4-70	8.8 vz	8.8 vz
Sight glass plates	Borosilicate glass acc. to DIN 7081 reflex (also available in transparent)		
Gaskets	Universal quality (aramid fiber) (other materials upon request)		

Installation instructions:

After welding in or welding on the base flange, it has to be checked, if the sealing surfaces have been deformed. Reworking may be necessary.



Dimensions:

Overall length	170	220	250	310	370	500	620	740	930
Visible area	120	170	200	260	320	450	570	690	880
Covered area						50	50	50	2x50
Number of bolts	8	10	12	14	16	24	28	32	42

At length of 500 up to 740 mm two glasses will be used. At 930 mm 3 glasses will be used.